

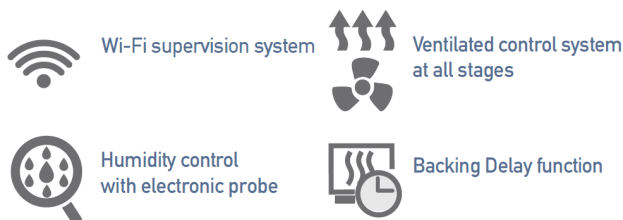
planet

**RETARDER-PROVER ROOM  
FOR TROLLEY 600x800 "COMPACT" VERSION**



**Technical features:**

- Modular structure with 80mm thick panels;
- Capacity: no.1 trolley 600x800;
- S/s AISI304 floor 20 mm thickness with integrated ramp;
- S/s AISI304 innerside, "plasteel" external side;
- 7" multi language and multifunction electronic board with touchscreen;
- Maximum adjustable humidity 90%rH by the electronic probe;
- Indirect/soft ventilated refrigeration;
- Trolley not included;
- Supplied assembled.

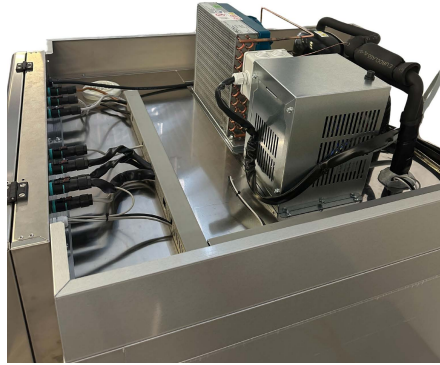


**TECHNICAL DATA:**

External dimensions (WxDxH)	cm
Internal dimensions (WxDxH)	cm
Trolleys capacity	nr
Max absorbed power	W
Refrigerated power*	W
Built-in condensing unit	
Temperature	°C
Humidity control	rH%
Gas	
Input voltage	
Climatic class	

CL1/MINI	
External dimensions (WxDxH)	96x117x240
Internal dimensions (WxDxH)	69x94x175
Trolleys capacity	1 600x800
Max absorbed power	1500
Refrigerated power*	1152
Built-in condensing unit	yes
Temperature	-5/+40
Humidity control	60 – 90%
Gas	R290
Input voltage	1x230V – 50Hz
Climatic class	5

\* Evap. -10°C cond. +45°C



---

**ACCESSORIES AND OVERPRICE ON REQUEST:**

48000540

Water condensing unit (overprice)