

# delice

## Ice Cream freezer cabinets

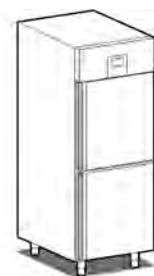
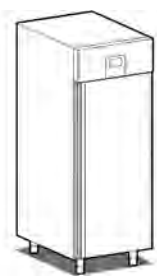


DELICE Ice Cream freezer cabinets are suitable to contain no. 54 ice-cream containers of 5 lts (36x16x12h cm) and are equipped with no. 5 shelves of 60x80 cm for ice-cream containers.

Entirely made in stainless steel, according to the highest quality standards, they are equipped with 75 mm insulation, obtained by HCFC-free polyurethane resins injections with utmost respect for the environment. Their radial bottom enables an easy cleaning for maximum hygiene and the magnetic seals are slot-in type, that facilitates their replacement.

Temperature is controlled by a user friendly back panel digital control, that assures the maximum precision of working cycles.

Supplied with "energy save" function.

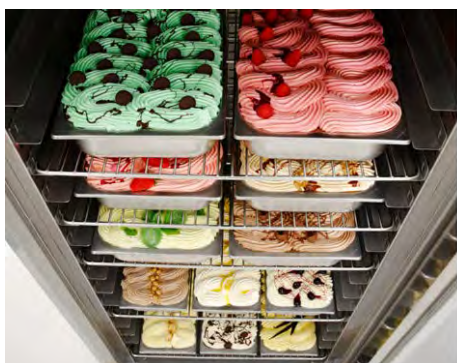


## TECHNICAL DATA:

Insulation thickness	mm
External dimensions (WxDxH)	mm
Capacity	lt
Doors	nr
Ice cream containers capacity	nr
Equipment (shelves)	nr
Rack with trays pitch (74 positions)	mm
Electronic control	
Refrigeration type	
Temperature	°C
Defrosting type	
Condensate water elimination	
Max absorbed power *	W
Refrigeration power **	W
Gas	
Input voltage	
Climatic class	

	ARG/40	ARG/41
Insulation thickness	75	75
External dimensions (WxDxH)	790x1080x2140	790x1080x2140
Capacity	900	900
Doors	1	2
Ice cream containers capacity	54 (5lt cm 36x16x12h)	48 (5lt cm 36x16x12h)
Equipment (shelves)	5	5
Rack with trays pitch (74 positions)	16,5	16,5
Electronic control	touch control	touch control
Refrigeration type	ventilated	ventilated
Temperature	-25/-10	-25/-10
Defrosting type	automatic by hot gas	automatic by hot gas
Condensate water elimination	automatic	automatic
Max absorbed power *	1200	1200
Refrigeration power **	920	920
Gas	R290	R290
Input voltage	1x230V/50Hz	1x230V/50Hz
Climatic class	5	5

\*Evap. -10°C cond. +45°C / \*\*ASHRAE (Evap. -23,3°C cond. +54,4°C)



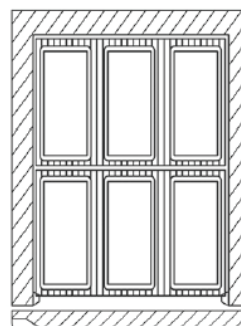
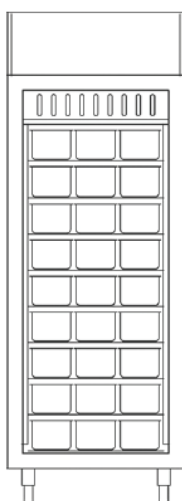
Internal detail



Back panel control board

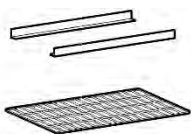


S/s rack for runners, 74 positions



Ice-cream containers capacity: no. 54 (ARG/40) and no. 48 (ARG/41) ice-cream containers (5 lt 36x16x12h cm)

## ACCESSORIES AND SURCHARGES ON REQUEST:



Pair of runners for cm 60x80 tray

Rilsan cm 60x80 shelf  
S/s cm 60x80 shelf



Set of Ø 100 castors



Prearranged version with valve system (deduction)

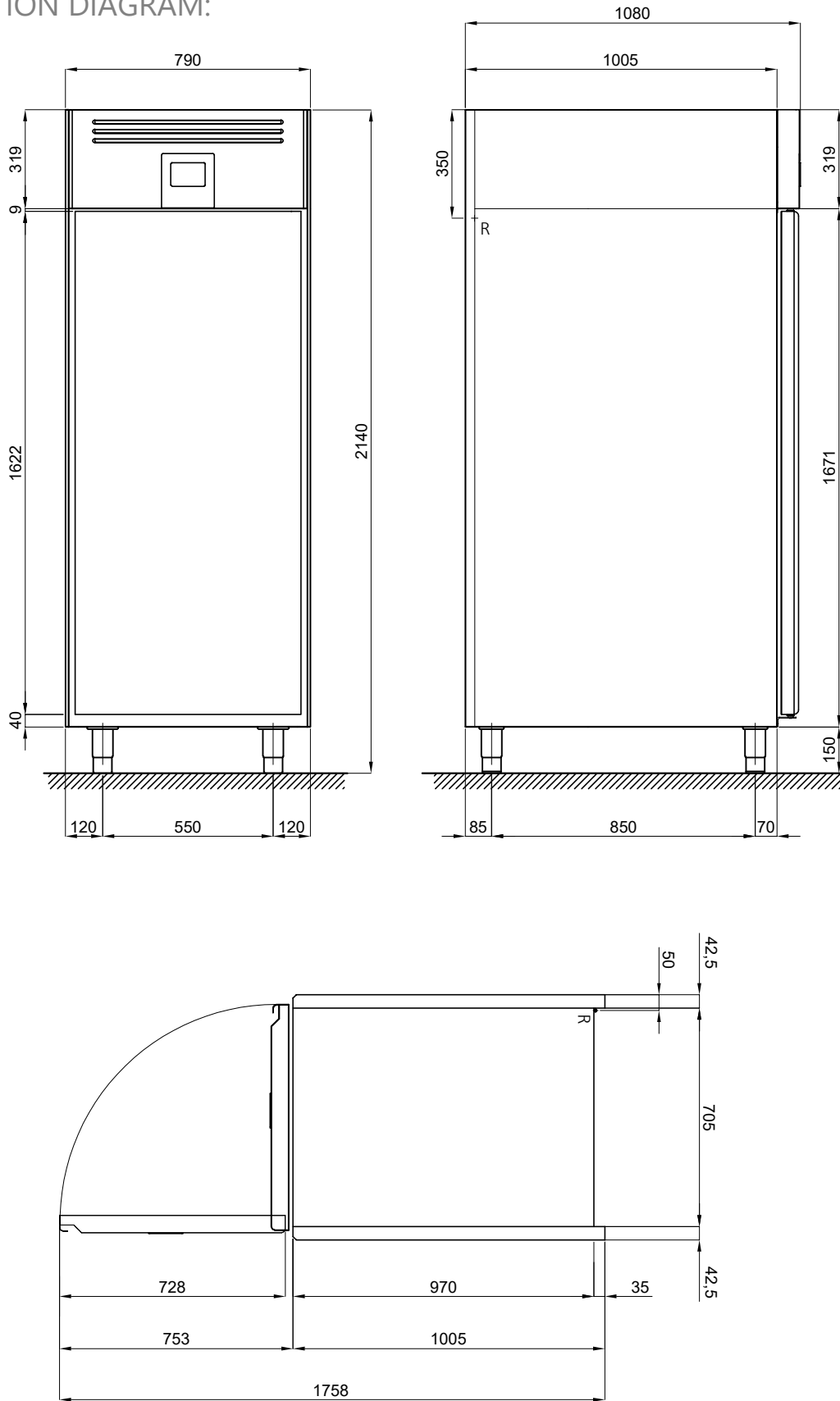


Wi-Fi supervising system (surcharge)



60Hz frequency

INSTALLATION DIAGRAM:



(R) ELECTRICITY SUPPLY : 230 V ~1 - 50HZ  
Wire length 2 mt ( \* SHUKO plug)